

O TANNENBAUM

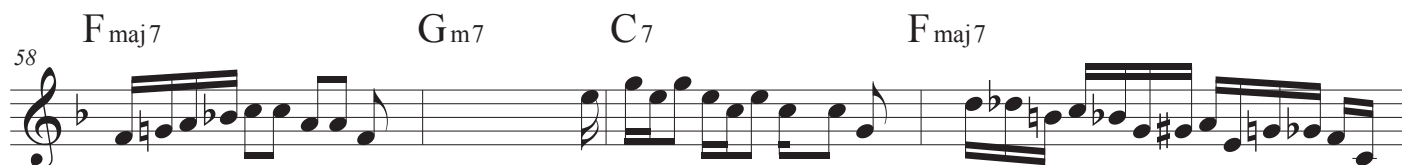
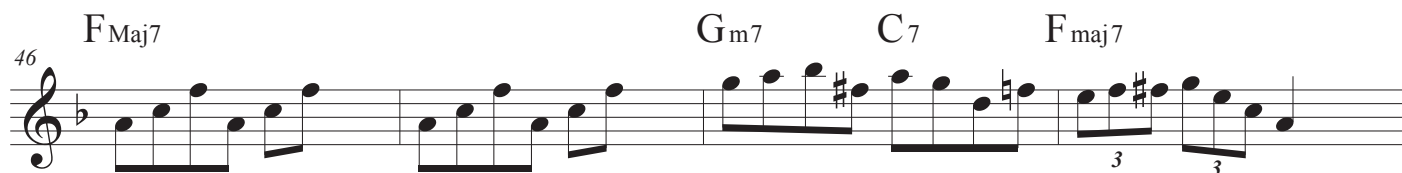
Sheet music for Bb Instruments, titled "O TANNENBAUM". The music is written in 4/4 time and features a key signature of one flat (Bb). The score is divided into eight systems, each containing a staff of music and a corresponding chord progression.

The chord progression for each system is:

- System 1: F maj7, Gm7, C7, F maj7
- System 2: F maj7, Gm7, C7, F maj7
- System 3: F maj7, Gm7, C7, F maj7
- System 4: F Maj7, Gm7, C7, F maj7
- System 5: F maj7, Gm7, C7, F maj7
- System 6: F maj7, Gm7, C7, F maj7
- System 7: F maj7, Gm7, C7, F maj7
- System 8: F Maj7, Gm7, C7, F maj7

The notation includes a treble clef, a key signature of one flat, and a 4/4 time signature. The music is written in a single staff per system. The first system shows a melodic line with a repeat sign at the beginning. The subsequent systems show a melodic line with a repeat sign at the beginning, followed by a series of eighth notes. The final system shows a melodic line with a repeat sign at the beginning, followed by a series of eighth notes.

O TANNENBAUM



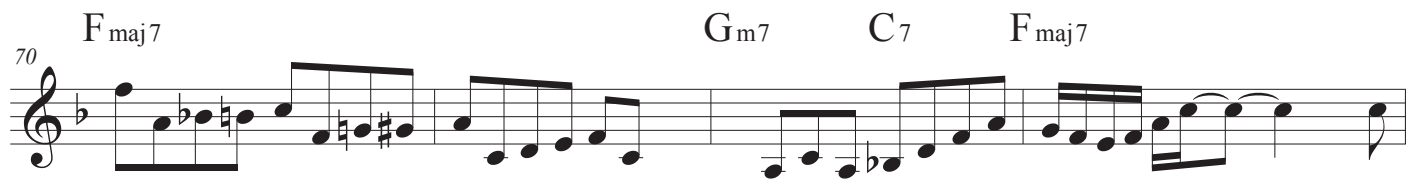
O TANNENBAUM

66 F^{maj7} G^{m7} C⁷ F^{maj7} 3



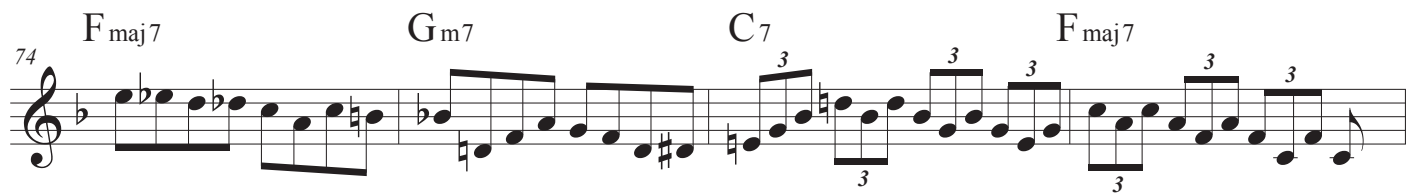
Staff 66-69: Treble clef, key of B-flat major. Measures 66-69. Chords: F^{maj7} (66), G^{m7} (67), C⁷ (68), F^{maj7} (69). Measure 69 has a '3' above it. The melody consists of eighth and sixteenth notes.

70 F^{maj7} G^{m7} C⁷ F^{maj7}



Staff 70-73: Treble clef, key of B-flat major. Measures 70-73. Chords: F^{maj7} (70), G^{m7} (71), C⁷ (72), F^{maj7} (73). The melody continues with eighth and sixteenth notes.

74 F^{maj7} G^{m7} C⁷ F^{maj7}



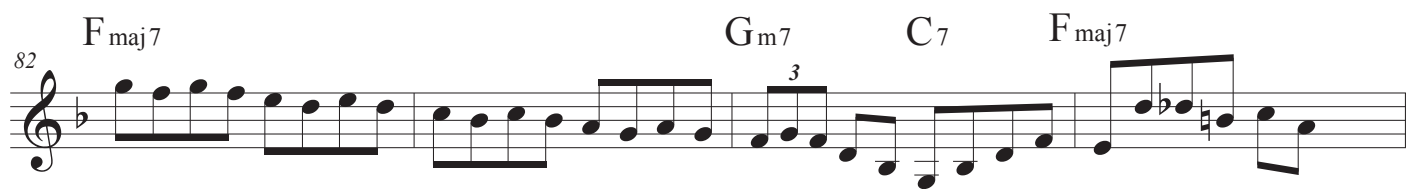
Staff 74-77: Treble clef, key of B-flat major. Measures 74-77. Chords: F^{maj7} (74), G^{m7} (75), C⁷ (76), F^{maj7} (77). Measures 76 and 77 contain triplets, indicated by a '3' above and below the notes.

78 F^{Maj7} G^{m7} C⁷ F^{maj7}



Staff 78-81: Treble clef, key of B-flat major. Measures 78-81. Chords: F^{Maj7} (78), G^{m7} (79), C⁷ (80), F^{maj7} (81). The melody features some eighth-note pairs.

82 F^{maj7} G^{m7} C⁷ F^{maj7}



Staff 82-85: Treble clef, key of B-flat major. Measures 82-85. Chords: F^{maj7} (82), G^{m7} (83), C⁷ (84), F^{maj7} (85). Measure 83 has a triplet of eighth notes.

86 F^{maj7} G^{m7} C⁷ F^{maj7}



Staff 86-89: Treble clef, key of B-flat major. Measures 86-89. Chords: F^{maj7} (86), G^{m7} (87), C⁷ (88), F^{maj7} (89). The melody is mostly quarter notes.

90 F^{maj7} G^{m7} C⁷ F^{maj7}



Staff 90-93: Treble clef, key of B-flat major. Measures 90-93. Chords: F^{maj7} (90), G^{m7} (91), C⁷ (92), F^{maj7} (93). The melody is more active with eighth and sixteenth notes.

94 F^{maj7} G^{m7} C⁷ F^{maj7}



Staff 94-97: Treble clef, key of B-flat major. Measures 94-97. Chords: F^{maj7} (94), G^{m7} (95), C⁷ (96), F^{maj7} (97). The melody continues with eighth and sixteenth notes.

O TANNENBAUM

4

98 F_{maj7} G_{m7} C₇ F_{maj7}

102 F_{maj7} G_{m7} C₇ F_{maj7}

106 F_{maj7} G_{m7} C₇ F_{maj7}

110 F_{Maj7} G_{m7} C₇ F_{maj7}